



JOHN'S[®]
NATURAL CORDIAL

Est. 1996



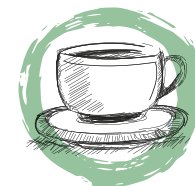
Tune the taste.



Good taste guaranteed

JOHN'S adds a unique touch to every product offer in seconds. With 43 different flavours, first-class recipes become truly sublime. The full-bodied taste and natural ingredients give every drink an unmistakeable character, adding the perfect finishing touch to all taste sensations. JOHN'S is the versatile element that noticeably elevates any recipe to the next level. Additional product benefits

are the top-quality ingredients and extremely gentle processing methods. Whether for cocktails, long drinks, shots, non-alcoholic refreshments, tea and coffee specialities or for bars, cafes and convenience stores, JOHN'S makes every recipe truly extraordinary and creates an unmistakable signature with its unique flavours.



*Versatile in use
unique in flavour*

Top quality

The finest raw materials and gentle processing yield the full-bodied, aromatic flavour of JOHN'S.

Success guaranteed

Whether for bars or cafes, ideal flow properties and optimal solubility enable flavours to unfold faster in the glass. This saves valuable time.

Premium look

The discerning character of JOHN'S is highlighted through its unique bottle design – an impressive eye-catcher both on the shelf and at the bar.

Everything under control

The striking bottle design is easy to hold and guarantees firm bottle control, thus ensuring that professionals always have everything well in hand.



A tall, clear glass filled with a reddish-brown liquid and ice cubes. Several fresh blackberries are floating in the drink. A slice of dried orange is perched on the rim, secured by a small wooden skewer. The glass is condensation-covered and sits on a grey concrete surface. In the background, a blurred blue and white can of 7-11 ADVANTAGE is visible. To the right, more blackberries are scattered on the surface.

Facts

JOHN'S is worth it!

- With attractive margins, JOHN'S is a leading choice for professionals.
- The entire range makes JOHN'S a round-the-clock sales booster.
- Professional sales support enhances business even further.

Advice from Matthias Knorr, Munich Bar School:

'A home-made lemonade earns you an average of around €2.00 to €3.00 more per drink. It's important to remember that guests are very willing to pay a little more for fresh, home-made products, but the purchasing price for home-made varieties is generally below that of bought lemonade.'

LEMONADES IN THE UPPER PRICE SEGMENT

(Sales price €4.00–€5.00)



Margin
€2.85–€3.85

Purchasing price
€1.15

HOME-MADE LEMONADE

(Sales price €4.00–€5.50)



Margin
€3.55–€5.05

Purchasing price

JOHN'S syrup 20 ml:	€0.13
Lime (1/2) 15 ml:	€0.12
Lemon (1/4) 15 ml:	€0.05
Water 150 ml:	€0.10
Ice/glass:	€0.05

Total: €0.45

Lemonades and iced teas

Home-made sales generators

Home-made is the buzzword of the hour – after all, no one can deny that such products simply taste better. With the finest ingredients to hand, individual taste and creativity can run free. Previously dominated by industrial and high-sugar sparkling drinks and lemonades, menus are now featuring more and more home-made soft drinks.

Home-made lemonades and self-mixed iced teas are the undisputed champion of culinary trends in recent years. The reason is clear: with delicious, home-made creations, it's easy to stand out from the competition whilst offering guests something unique.

See the following pages for inspiring creations.





Citrus Lemonade

- 40 ml JOHN'S Citrus
- Peel of each of the following:
lemon, lime, orange and grapefruit
- 20 ml Lime juice

Add the ingredients to the glass, top up with soda and serve with crushed ice.



Passion Lemonade

- 40 ml JOHN'S Passion Fruit
- 5 Slices of cucumber
- 20 ml Apple juice
- 20 ml Lemon juice

Add the ingredients to the glass, top up with soda and serve with crushed ice.



Pear-Kiwi Lemonade

- 20 ml JOHN'S Pear
- 20 ml JOHN'S Kiwi
- 20 ml Lime juice
- 300 ml Soda

Add the ingredients to the glass, garnish with thinly sliced kiwi and serve with crushed ice.



Iced teas

Tea with a twist!

Tea is one of the oldest beverages in the world and with its plethora of different varieties, it remains firmly on-trend today. Iced teas thus appeal to a young, modern target group, and home-made varieties present a real alternative to conventional lemonades and soft drinks. The tea content also gives the drinks an invigorating effect.

Creating home-made iced teas is particularly easy with the large variety of JOHN'S cordials and syrups – the drinks exude exclusivity as an authentic experience whilst offering a lower purchasing price and higher margins than conventional soft drinks.

Enjoy our recipe ideas.



Coconut Iced Tea

- 20 ml JOHN'S Blueberry
- 20 ml JOHN'S Coconut
- 150 ml Strong, cold black tea
- 20 ml Lemon juice

Add the ingredients to the glass and serve with crushed ice.



Elderberry Iced Tea

- 40 ml JOHN'S Elderflower
- 150 ml Cold green tea
- 20 ml Lime juice
- Lime slices
- Fresh mint

Add the ingredients to the glass and serve with crushed ice.

Minimum effort, maximum effect!

Thanks to the high quality of its ingredients and its careful preparation, approximately 30 ml of JOHN'S syrup is enough to make one glass of home-made iced tea.



Peach Iced Tea

- 30 ml JOHN'S Peach
- 10 ml JOHN'S Vanilla
- 150 ml Strong, cold black tea
- 20 ml Orange juice

Add the ingredients to the glass and serve with crushed ice.



Cocktails

JOHN'S does cocktails!

We are always enhancing our portfolio
with fresh ideas from professional
bartenders – what will be next?

The secret to exceptional cocktails? Excellent ingredients!

Cocktails continue to present a booming segment that is guaranteed to generate sales. With its own creations and signature drinks, every location can stand out from the competition. Whether classics like the Mojito, Sex on the Beach and Tequila Sunrise or trendy tiki-style inventions like the Piña Colada or Zombie, the wide variety offered by JOHN'S guarantees the perfect flavour every time.

This ensures that even the most popular cocktails can be reinvented to create new taste sensations with minimal product use. JOHN'S brings a fresh flavour to every cocktail classic.



Margarita

Mexico's national cocktail!
The queen of all cocktails.

50 ml White tequila
15 ml Triple sec
30 ml JOHN'S Citrus

Shake the ingredients vigorously with ice and strain into a salt-rimmed glass.



Hurricane

A tropical taste sensation with fresh juices, rum and JOHN'S.

30 ml White rum
20 ml Brown rum
20 ml Freshly squeezed lime juice
20 ml JOHN'S Passion Fruit

Pour into a shaker with passion fruit juice and orange juice, mix well and serve with crushed ice.



Sex on the Beach

A true bar classic guaranteed to create summervibes.

- 40 ml Apricot liqueur
- 40 ml Vodka
- 80 ml Pineapple juice
- 40 ml Orange juice
- 40 ml JOHN'S Cranberry

Mix the ingredients with ice in a shaker.

Pour the cocktail into a glass with ice.

Garnish with slices of pineapple or orange.



Strawberry Daiquiri

JOHN'S Strawberry underlines the combination of summery strawberries and rum.

- 60 ml White rum
- 20 ml Freshly squeezed lemon juice
- 30 ml JOHN'S Strawberry

Pour into a mixer along with five ripe strawberries and mix with crushed ice.



Piña Colada

One of the most famous and popular cocktails in the world.

- 60 ml White rum
- 100 ml Pineapple juice
- 40 ml JOHN'S Coconut
- 20 ml Whipped cream

Vigorously shake the rum, pineapple juice, JOHN'S Coconut, whipped cream and ice and pour into a glass. Garnish with a slice of pineapple and a maraschino cherry.



Raspberry Mojito

A fruity twist on the classic.

- 50 ml White rum
- 20 ml Freshly squeezed lime juice
- 20 ml JOHN'S Mojito
- 10 ml JOHN'S Raspberry
- 5-10 Mint leaves
- 5-8 Raspberries

Add mint, lime juice and JOHN'S Mojito to a glass and fill with ice. Pour in rum, stir, top up with soda and garnish with raspberries.

Cocktails

Mahiki Life Saver

South Sea vibes in a glass.

- 50 ml MAHIKI Coconut
- 50 ml Guava juice
- 20 ml JOHN'S Passion Fruit
- 30 ml Freshly squeezed lime juice
- 1 dash Angostura Bitters

Mix all of the ingredients and pour into a tiki mug filled with crushed ice. Garnish with a slice of pineapple and a maraschino cherry.



Coffee

A new-found love for coffee

JOHN'S can be used to refine countless daytime beverages. A dash in assorted tea, coffee specialities and mixed drinks enhances flavour with a striking effect. It's precisely through these subtle taste nuances that JOHN'S rekindles our love for coffee every day anew. And brings an invigorating kick to sales, too.





White Iced Latte

The flavour of white chocolate brings an irresistibly sweet note to the iced latte.

30 ml JOHN'S White Chocolate
180 ml Milk
1 Espresso

Add the syrup and ice to a glass and slowly pour in the milk. Finally, carefully pour in the espresso to create layers. Serve without stirring.



Almond Mochaccino

Milk refined with JOHN'S Almond meets the intense flavour of mocha.

10 ml JOHN'S Almond
1 Mocha
180 ml Milk

Pour JOHN'S Almond into cold milk, stir and froth. Add the mocha to the almond milk and top with some milk froth.



Crunchy Vanilla

The highlight is the caramelised crunch of JOHN'S Vanilla on milk froth and espresso.

1 Espresso macchiato
10 ml JOHN'S Vanilla

Prepare the espresso macchiato and drizzle a fine lattice design over the froth with JOHN'S Vanilla. Caramelize this with a kitchen blowtorch.



Coconut Coffee

An eggnog with a Caribbean touch that's guaranteed to surprise.

1 Coffee
2 Egg yolks
20 ml JOHN'S Coconut
20 ml Rum (optional)
1 dash Milk

Beat the organic egg yolk with JOHN'S Coconut and a dash of milk until frothy. Slowly pour the coffee through the froth. Finish with Caribbean rum if you like.

Bag in Box

*A good juice impresses
with a mild, fruity flavour.*

Get the day off to a healthy start with JOHN'S fruit juices. The juices are the perfect addition to every breakfast buffet. For all of its products, JOHN'S focuses on quality and natural, extremely gentle processing – only the finest ingredients are used.

The portfolio includes the four classic juice varieties Orange, Clear Apple, Pink Grapefruit and 12-Fruit Multivitamin. The Bag in Box juices (10 litres) are ideal for use in the hotel and catering industries and for all customers who need a reliable dispensing system at busy times. Whether at the press of a button on the dispenser, drawn from the XXL Mason jar or poured from the carafe, the possibilities are endless – but the result is always unmistakably fruity!



Fresh and fruity

As a premium juice supplier, JOHN'S places the utmost importance on uncompromising quality. Only meticulously selected ingredients and exquisite fruits are used.

Perfect on their own, sublime in company

The fruit juices are delicious on their own! And they're also the ideal basis for the preparation of HENDERSON AND SONS frozen smoothies and bring a fruity touch to home-made lemonades and teas, too.

The varieties

- Orange Juice (Smooth)
- Clear Apple Juice
- Pink Grapefruit
- 12-Fruit Multivitamin

PREMIUM DISPENSERS – SIMPLE HANDLING

Especially for use in hotels, catering, bakeries, and the like, JOHN'S offers its customers a range of dispenser solutions on a loan basis. These bag in box systems include the device, installation and service. For the perfect juice dispenser, all you have to do is buy the right juice.

STORAGE

Can be stored at room temperature for up to 8 months from production date / at 8 degrees for up to 4 days once open

PACKAGING

PU / box: 1 / box yields 10 litres / 50 glasses
à 0.2 litres per box

The perfect dispensing system for every use!



Dispenser upon request!



The alternative to purchasing: hire your dispensers!

Apple-Mint Lemonade

Wash a **lime** in hot water, rub dry and thinly grate the peel. Halve the fruit and squeeze out the juice. Wash **4 stalks of mint**, shake dry and pluck off the leaves. Next, wash an **apple**, cut into quarters and remove the core. In a blender, finely mix the mint, lime juice and lime peel together with **4 tbsp brown sugar** and **1/4 litres of apple juice**. Top up with **one litre of cold mineral water** to taste.

The flavour of life

JOHN'S Cane Sugar

A deep, intense cane sugar flavour, perfect for taking Gin Fizz to another level.

JOHN'S Coconut

Refreshing, delicate coconut extracts with sweet nuances. Ideal for Piña Coladas.

JOHN'S Egg White Substitute

The innovative solution for mixing cocktails containing egg white without having to worry about storage life. Ideal consistency and creaminess for drinks such as Sours.

JOHN'S Pear

Fruity flavour from sun-ripened pears. Aromatic and sweet. Delicious when added to Pear-Kiwi Lemonade for an ideally refreshing beverage

JOHN'S Elderflower

The scintillating, trendy flavour that has become a firm classic. Perfect for the Hugo cocktail.

JOHN'S Vanilla

Natural and authentic with a subtle sweetness. Brings an irresistible note to Vanilla Soleros.

JOHN'S Mango

An exotic, sweet taste with a slightly sour finish. Ideal for Apricot and Mango Martinis.



JOHN'S Mojito

The taste of the classic with fruity-sweet refinement. Ideal for Mojitos.

JOHN'S Ginger

Brings the perfect touch of spice to every drink creation. Great for a Moscow Mule.

JOHN'S Almond

An expressive, sweet and slightly tart note with a distinctive character. Fantastic for a Mai Tai.

JOHN'S White Chocolate

A buttery vanilla note fused with a creamy cocoa flavour. Perfect for White Iced Lattes.

JOHN'S Honey

Sweet and subtly floral flavour reminiscent of fresh honey. Lends Honey Grog its characteristic taste.

JOHN'S Amaretto

A unique aroma reminiscent of marzipan. Delicious in Gingeretto.

JOHN'S Pineapple

Fruity, refreshing flavour. Perfect for the exotic Coconut Kiss.

Our portfolio: 43 varieties of JOHN'S

John's knows all about good taste – and in the purest quality, of course! From fruity and sweet to bitter and tart, our cordials and syrups leave nothing to be desired.

The key difference between a syrup and a cordial is the sugar and fruit content. A cordial, for instance, tends to have much less sugar than a syrup.

This also explains the different mixing ratios.

JOHN'S Banana

Sun-ripened bananas reveal a sweet and slightly creamy flavour. Perfect for a Vodka Contact.

JOHN'S Guava

With the extraordinary and intense flavour of fresh, ripe guavas. A blend of flavours from pear, fig and quince. Adds summer flair to the Guava Sunrise.

JOHN'S Raspberry

The unmistakable flavour of fresh raspberries with a subtly acidic finish. A must for Raspberry Mojitos.

JOHN'S Cranberry

The intensely sweet-tart flavour of cranberries. Sensational in a Sex on the Beach.

JOHN'S Pink Grapefruit

A refreshing blend of sweetness, acidity and bitterness. Brings a distinctive touch to Pink Grapefruit Tequila.

JOHN'S Blackberry

The velvety, rounded flavour profile of a blackberry – subtle sweetness fused with a fine, fruity acidity. Simply irresistible in a Blackberry Gin.

JOHN'S Blueberry

A sweet and acidic note for fruity drinks. Particularly popular in Blueberry Daiquiris.



JOHN'S Passion Fruit

An exotic blend with a fruity, tart echo. Ideal for the Hurricane cocktail.

JOHN'S White Peach

The subtly acidic, intense and refreshing flavour of juicy peach. Outstanding in a White Peach Julep.

JOHN'S Watermelon

The fresh and juicy flavour of ripe watermelon. Combine with mint for a refreshing lemonade beverage.

JOHN'S Blood Orange

A juicy citrus aroma. The perfect blend of sweetness, acidity and bitterness. A colourful eye-catcher in a Blood Orange Gin Tonic.

JOHN'S Strawberry

The unmistakable, full-bodied character of succulent fruits. Makes an irresistible Strawberry Daiquiri.

JOHN'S Grenadine

Fruity and sweet nuances with an intense taste. Brings a special touch of class to the Planter's Punch.

JOHN'S Blackcurrant

The intense, slightly sour taste of blackcurrant. Ideal for Kir Royal.

JOHN'S Blue Curacao

A new take on the 1980s classic. Perfect for a delicious Swimming Pool.

1:4

is the mixing ratio for cordials.

1:8

is the mixing ratio for syrups. This means that for one part syrup, eight parts of water are required to create a ready-to-drink beverage.

JOHN'S Lemon Squash

The ideal accent for refreshing sourness. Sublime for the Tequila Sunrise.

JOHN'S Lime Juice

The finest cordial mixer to elevate flavour. Perfect for Caipirinhas.

JOHN'S Green Apple

The refreshing and juicy flavour of green apple with a slightly acidic finish. Heavenly in an Apple Dream.

JOHN'S Cucumber

Tastes like freshly sliced cucumber and brings a unique flavour to Gin Tonic.

JOHN'S Peach

The fruity, full-bodied flavour of peaches. Makes Peach Lemonade an irresistible thirst quencher.

JOHN'S Caramel

An inimitable aromatic and sweet flavour profile. For an unbeatable Caramel Smoothie.

JOHN'S Mate Tea

Distinctive, smoky and subtly tart ingredient for the latest drinks to storm the bar scene, such as the Southern Explosion.



JOHN'S Citrus

The clean, fresh flavour of ripe lemons. The perfect refinement for Margaritas.

JOHN'S Lemonade

The perfect ingredient for fresh, home-made lemonades.

JOHN'S Kiwi

A fresh, fruity flavour with a subtly tart and acidic finish. The Kiwi-Passion fruit provides a decisive shot of acidity.

JOHN'S Hazelnut

An intense hazelnut note for warm and cold drinks. Delicious in a Hazelnut Julep.

JOHN'S Cinnamon

Lends a distinctive cinnamon flavour with a subtle peppery note to every drink. Try it in a Cinnamon Cappuccino.

JOHN'S Chocolate

Unites the tartness of cocoa beans with the sweetness of fresh chocolate mousse. Wonderful for Chocolate Caramel Coffee.

JOHN'S Chai Tea

Natural sweetness for trendy asian tea varieties. Ideal for the Chai Russian cocktail or chai tea.



Up to 40 boxes are delivered on a
JOHN'S mixed pallet (Euro pallet).

JOHN'S Citrus	JOHN'S Elderflower	JOHN'S Grenadine	JOHN'S Strawberry	JOHN'S Blue Curaçao	JOHN'S Mojito	JOHN'S Caramel	Single-use cardboard box	
6× 0.7 l bottle	6× 0.7 l bottle	6× 0.7 l bottle	6× 0.7 l bottle	6× 0.7 l bottle	6× 0.7 l bottle	6× 0.7 l bottle	Contents	
4.2 l	4.2 l	4.2 l	4.2 l	4.2 l	4.2 l	4.2 l	Volume	
251 mm	251 mm	251 mm	251 mm	251 mm	251 mm	251 mm	Length	
170 mm	170 mm	170 mm	170 mm	170 mm	170 mm	170 mm	Width	
285 mm	285 mm	285 mm	285 mm	285 mm	285 mm	285 mm	Height	
7.42 kg	8.62 kg	8.62 kg	8.62 kg	8.62 kg	8.62 kg	8.4 kg	Filled weight	
2240	2245	2253	2250	2256	2262	2224	Art. no.	
18 months	18 months	24 months	24 months	24 months	24 months	24 months	Shelf life after filling	
4025127022403	4025127022458	4025127022533	4025127022502	4025127022564	4025127022625	4025127022243	EAN code box	
4025127022977	4025127022960	4025127022908	4025127022915	4025127022892	4025127022878	4025127097258	EAN code bottle	

JOHN'S Passion Fruit	JOHN'S Blackcurrant	JOHN'S Cane Sugar	JOHN'S Almond	JOHN'S Coconut	JOHN'S Vanilla	JOHN'S Amaretto	JOHN'S Hazelnut	JOHN'S Mate Tea	Single-use cardboard box	
6× 0.7 l bottle	6× 0.7 l bottle	6× 0.7 l bottle	6× 0.7 l bottle	6× 0.7 l bottle	6× 0.7 l bottle	6× 0.7 l bottle	6× 0.7 l bottle	6× 0.7 l bottle	Contents	
4.2 l	4.2 l	4.2 l	4.2 l	4.2 l	4.2 l	4.2 l	4.2 l	4.2 l	Volume	
251 mm	251 mm	251 mm	251 mm	251 mm	251 mm	251 mm	251 mm	251 mm	Length	
170 mm	170 mm	170 mm	170 mm	170 mm	170 mm	170 mm	170 mm	170 mm	Width	
285 mm	285 mm	285 mm	285 mm	285 mm	285 mm	285 mm	285 mm	285 mm	Height	
8.62 kg	8.62 kg	8.4 kg	8.62 kg	8.62 kg	8.62 kg	8.4 kg	8.62 kg	8.4 kg	Filled weight	
2259	2265	2268	2271	2274	2277	2227	2221	2280	Art. no.	
24 months	24 months	24 months	24 months	24 months	24 months	24 months	24 months	24 months	Shelf life after filling	
4025127022595	4025127022656	4025127022687	4025127022717	4025127022748	4025127022779	4025127022274	4025127022212	4025127022809	EAN code box	
4025127022885	4025127022861	4025127022854	4025127022847	4025127022830	4025127022823	4025127097234	4025127097272	4025127097180	EAN code bottle	

JOHN'S Pineapple	JOHN'S Blood Orange	JOHN'S Blackberry	JOHN'S Chai Tea	JOHN'S Cranberry	JOHN'S Raspberry	JOHN'S Guava	JOHN'S Blueberry	JOHN'S Ginger	Single-use cardboard box	
6× 0.7 l bottle	6× 0.7 l bottle	6× 0.7 l bottle	6× 0.7 l bottle	6× 0.7 l bottle	6× 0.7 l bottle	6× 0.7 l bottle	6× 0.7 l bottle	6× 0.7 l bottle	Contents	
4.2 l	4.2 l	4.2 l	4.2 l	4.2 l	4.2 l	4.2 l	4.2 l	4.2 l	Volume	
251 mm	251 mm	251 mm	251 mm	251 mm	251 mm	251 mm	251 mm	251 mm	Length	
170 mm	170 mm	170 mm	170 mm	170 mm	170 mm	170 mm	170 mm	170 mm	Width	
285 mm	285 mm	285 mm	285 mm	285 mm	285 mm	285 mm	285 mm	285 mm	Height	
8.62 kg	8.62 kg	8.62 kg	8.4 kg	8.62 kg	8.62 kg	8.62 kg	8.62 kg	8.62 kg	Filled weight	
2282	2248	2288	2214	2290	2286	2249	2223	2220	Art. no.	
36 months	36 months	36 months	18 months	36 months	36 months	36 months	24 months	24 months	Shelf life after filling	
4025127091683	4025127091621	4025127091799	4025127022144	4025127091768	4025127091829	4025127091355	4025127022236	4025127022205	EAN code box	
4025127091690	4025127091638	4025127091805	4025127096527	4025127091775	4025127091836	4025127091362	4025127093007	4025127093021	EAN code bottle	

JOHN'S Lime Juice	JOHN'S Lemon Squash	JOHN'S Kiwi	JOHN'S Lemonade	JOHN'S Mango	JOHN'S Peach	JOHN'S White Chocolate	JOHN'S Cinnamon	JOHN'S Pear	Single-use cardboard box
6× 0.7 l bottle 4.2 l 251 mm 170 mm 285 mm 7.6 kg 2230 18 months	6× 0.7 l bottle 4.2 l 251 mm 170 mm 285 mm 7.96 kg 2235 18 months	6× 0.7 l bottle 4.2 l 251 mm 170 mm 285 mm 8.62 kg 2217 36 months	6× 0.7 l bottle 4.2 l 251 mm 170 mm 285 mm 8.62 kg 2213 18 months	6× 0.7 l bottle 4.2 l 251 mm 170 mm 285 mm 8.62 kg 2284 36 months	6× 0.7 l bottle 4.2 l 251 mm 170 mm 285 mm 8.62 kg 2226 24 months	6× 0.7 l bottle 4.2 l 251 mm 170 mm 285 mm 8.62 kg 2212 36 months	6× 0.7 l bottle 4.2 l 251 mm 170 mm 285 mm 8.62 kg 2206 36 months	6× 0.7 l bottle 4.2 l 251 mm 170 mm 285 mm 8.62 kg 2292 36 months	Contents Volume Length Width Height Filled weight Art. no. Shelf life after filling
4025127022304 4025127022991	4025127022359 4025127022984	4025127091386 4025127091393	4025127022137 4025127093045	4025127091850 4025127091867	4025127022267 4025127092987	4025127091478 4025127091485	4025127091508 4025127091515	4025127091737 4025127091744	EAN code box EAN code bottle

Coming soon!

JOHN'S Egg White Substitute	JOHN'S Honey	JOHN'S Banana	JOHN'S White Peach	JOHN'S Watermelon	JOHN'S Pink Grapefruit	JOHN'S Green Apple	JOHN'S Cucumber	JOHN'S Chocolate	Single-use cardboard box
-	-	-	-	-	-	-	-	-	Contents Volume Length Width Height Filled weight Art. no. Shelf life after filling
-	-	-	-	-	-	-	-	-	
-	-	-	-	-	-	-	-	-	
-	-	-	-	-	-	-	-	-	
-	-	-	-	-	-	-	-	-	
-	-	-	-	-	-	-	-	-	
-	-	-	-	-	-	-	-	-	
-	-	-	-	-	-	-	-	-	
-	-	-	-	-	-	-	-	-	EAN code box EAN code bottle

Bag in Box

JOHN'S Pink Grapefruit	JOHN'S Clear Apple Juice	JOHN'S Orange Juice	JOHN'S 12-Fruit Multivitamin	Bag in Box
1× 10 litres 8 8 64 35/27.5/13 cm 10.7 kg 120/80/160 cm 017000 8 months 4053091170004	1× 10 litres 8 8 64 35/27.5/13 cm 10.7 kg 120/80/160 cm 017001 8 months 4053091170011	1× 10 litres 8 8 64 35/27.5/13 cm 10.7 kg 120/80/160 cm 017002 8 months 4053091170028	1× 10 litres 8 8 64 35/27.5/13 cm 10.7 kg 120/80/160 cm 017005 8 months 4053091170059	Contents/volume Box/layer Layer/pallet Box/pallet Box (L/W/H) Weight/box Pallet (L/W/H) Art. no. Shelf life after filling EAN code pack